

LE CLAIRE

SEIT 1982

KUNST

1 ADOLPH VON MENZEL

1815 Breslau - Berlin 1905

*The Porta San Michele in Bressanone
(Brixen)*

Carpenter's pencil, with stumping
180 x 113 mm

Cat. no. 22



2 ADOLPH VON MENZEL

1815 Breslau - Berlin 1905

Portrait of Fräulein Hanna Maercker
1848

Watercolour and gouache, over an
underdrawing in pencil
221 x 180 mm

Cat. no. 5



3 ADOLPH VON MENZEL

1815 Breslau - Berlin 1905

Study of a Tree

Carpenter's pencil, with stumping
202 x 125 mm

Cat. no. 30



LE CLAIRE

SEIT 1982

KUNST

4 ADOLPH VON MENZEL

1815 Breslau - Berlin 1905

An Old Man with His Head Turned

Away

1889

Carpenter's pencil, with stumping

206 x 128 mm

Cat. no. 33



5 ADOLPH VON MENZEL

1815 Breslau - Berlin 1905

A Woman in a Large Hat, Facing Left

Carpenter's pencil, with stumping

1897

144 x 94 mm

Cat. no. 41



6 ADOLPH VON MENZEL

1815 Breslau - Berlin 1905

On the Mountainside

Pencil with stumping

247 x 327 mm

Cat. no. 17



LE CLAIRE

SEIT 1982

KUNST

7 ADOLPH VON MENZEL

1815 Breslau - Berlin 1905

The Side of a Mountain Farmhouse
Carpenter's pencil, with stumping
127 x 201 mm

Cat. no. 35



8 ADOLPH VON MENZEL

1815 Breslau - Berlin 1905

A Farmstead near Kassel
1847
Pencil on buff paper
128 x 202 mm

Cat. no. 2



9 ADOLPH VON MENZEL

1815 Breslau - Berlin 1905

Study of a Woman's Right Hand
Pastel and charcoal on brown paper
176 x 243 mm

Cat. no. 9



LE CLAIRE

SEIT 1982

KUNST

10 ADOLPH VON MENZEL

1815 Breslau - Berlin 1905

Portrait of Eduard Heinrich Kamke

1851

Pencil, with stumping and heightened with touches of white, on prepared paper laid down on board

125 x 293 mm

Cat. no. 10



11 ADOLPH VON MENZEL

1815 Breslau - Berlin 1905

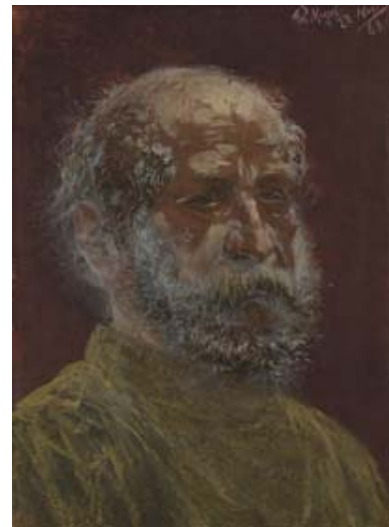
The Head of a Bearded Man

1861

Gouache and pastel on brown paper, laid down on board

434 x 314 mm

Cat. no. 11



12 ADOLPH VON MENZEL

1815 Breslau - Berlin 1905

A Bearded Man Looking Down and to the Right

1892

Carpenter's pencil, with stumping

208 x 130 mm

Cat. no. 38



LE CLAIRE

SEIT 1982

KUNST

13 ADOLPH VON MENZEL

1815 Breslau - Berlin 1905

Study of the Back of a Man Bending Down

1882

Carpenter's pencil, with stumping
226 x 303 mm

Cat. no. 24



14 ADOLPH VON MENZEL

1815 Breslau - Berlin 1905

The Head of a Bearded Man, Facing Right

Carpenter's pencil, with stumping, on
paper backed with Japan paper
126 x 73 mm

Cat. no. 40



15 ADOLPH VON MENZEL

1815 Breslau - Berlin 1905

Studies of a Man with his Head Bowed

1881

Carpenter's pencil
126 x 194 mm

Cat. no. 21



16 ADOLPH VON MENZEL

1815 Breslau - Berlin 1905

Study of Three Heads

1898

Carpenter's pencil, with stumping

310 x 230 mm

Cat. no. 42



17 ADOLPH VON MENZEL

1815 Breslau - Berlin 1905

A Sheet of Various Studies; Various Test Marks of Watercolour (verso)

Carpenter's pencil and watercolour (recto); watercolour (verso)

170 x 130 mm



18 ADOLPH VON MENZEL

1815 Breslau - Berlin 1905

Interior of a Farmhouse Loft

Carpenter's pencil with stumping and scratching-out, on sturdy, rough-textured paper

238 x 332 mm



LE CLAIRE

SEIT 1982

KUNST

19 ADOLPH VON MENZEL

1815 Breslau - Berlin 1905

Study of a Man Smoking, in Profile

1888

Carpenter's pencil, with stumping, and touches of watercolour, on a sheet of printed paper
215 x 142 mm

Cat. no. 31



20 ADOLPH VON MENZEL

1815 Breslau - Berlin 1905

A Seated Woman Reading (Portrait of Emilie Fontane)

Watercolour and gouache on thin cardboard. On the verso extensively inscribed and dated by the artist.
112 x 73 mm

Cat. no. 15



21 ADOLPH VON MENZEL

1815 Breslau - Berlin 1905

*A Seated, Elegantly Dressed Lady Eating
from a Plate ("Entre deux dances")*

1878

Pen and black ink and grey wash

172 x 107 mm

Cat. no. 19



22 ADOLPH VON MENZEL

1815 Breslau - Berlin 1905

*Coffee Time in Kissingen (Kaffeezeit in
Kissingen)*

1886

Gouache and watercolour on card. Laid
down

116 x 184 cm

Cat. no. 28



23 ADOLPH VON MENZEL

1815 Breslau - Berlin 1905

A Woman Holding an Umbrella

1882

Carpenter's pencil, with stumping

204 x 127 mm

Cat. no. 23



LE CLAIRE

SEIT 1982

KUNST

24 ADOLPH VON MENZEL

1815 Breslau - Berlin 1905

The Head of an Old Woman with a Shawl

1894

Carpenter's pencil, with stumping

210 x 130 mm

Cat. no. 39



25 ADOLPH VON MENZEL

1815 Breslau - Berlin 1905

Two Studies of a Right Arm and Hand Holding a Glass

1890

Carpenter's pencil, with stumping

127 x 206 mm

Cat. no. 34



26 ADOLPH VON MENZEL

1815 Breslau - Berlin 1905

A Bearded Man Looking Down to the Left

1891

Carpenter's pencil and black chalk,
with stumping

206 x 130 mm

Cat. no. 37



LE CLAIRE

SEIT 1982

KUNST

27 ADOLPH VON MENZEL

1815 Breslau - Berlin 1905

*Study of a Man Wearing a Hat and Coat
and Bending Forward*

Charcoal and black chalk, with
stumping
211 x 121 mm

Cat. no. 13



28 ADOLPH VON MENZEL

1815 Breslau - Berlin 1905

*A Man Drinking, with a Separate Study
of Hand*

1884

Carpenter's pencil, with stumping
226 x 147 mm

Cat. no. 27



29 ADOLPH VON MENZEL

1815 Breslau - Berlin 1905

*Landscape with a Groove of Trees,
Brandenburg*

Pencil, with stumping
128 x 203 mm

Cat. no. 8



LE CLAIRE

SEIT 1982

KUNST

30 ADOLPH VON MENZEL

1815 Breslau - Berlin 1905

*A View of Freyburg, with Schloß
Neuenburg*

Pencil, with stumping
95 x 154 mm

Cat. no. 12



31 ADOLPH VON MENZEL

1815 Breslau - Berlin 1905

*An Alley in a Mountain Town, Possibly
in the South Tyrol*

Carpenter's pencil, with stumping
203 x 119 mm

Cat. no. 26



32 ADOLPH VON MENZEL

1815 Breslau - Berlin 1905

A Man with a Birdcage

1883

Carpenter's pencil, with stumping
212 x 122 mm

Cat. no. 25



LE CLAIRE

SEIT 1982

KUNST

33 ADOLPH VON MENZEL

1815 Breslau - Berlin 1905

Man and Soldiers at a Shooting Range

Graphite, with stumping and scratching out, heightened with white on prepared paper
210 x 290 mm (299 x 391 mm)

Cat. no. 4



34 ADOLPH VON MENZEL

1815 Breslau - Berlin 1905

The Head of a Fourteen-Year Old Girl, in Profile to the Left

Carpenter's pencil, with stumping, on
paper laid down on board
129 x 82 mm

Cat. no. 18



35 ADOLPH VON MENZEL

1815 Breslau - Berlin 1905

A Man at a Grinding Stone

Carpenter's pencil, with stumping
207 x 130 mm

Cat. no. 20



LE CLAIRE

SEIT 1982

KUNST

36 ADOLPH VON MENZEL

1815 Breslau - Berlin 1905

*Three Studies of a Bearded Man Facing
Left*

Carpenter's pencil, with stumping
210 x 128 mm

Cat. no. 32



37 ADOLPH VON MENZEL

1815 Breslau - Berlin 1905

Portrait of Frau Constanze Puhmann

Pencil on paper, trimmed to an oval
230 x 185 mm

Cat. no. 7

